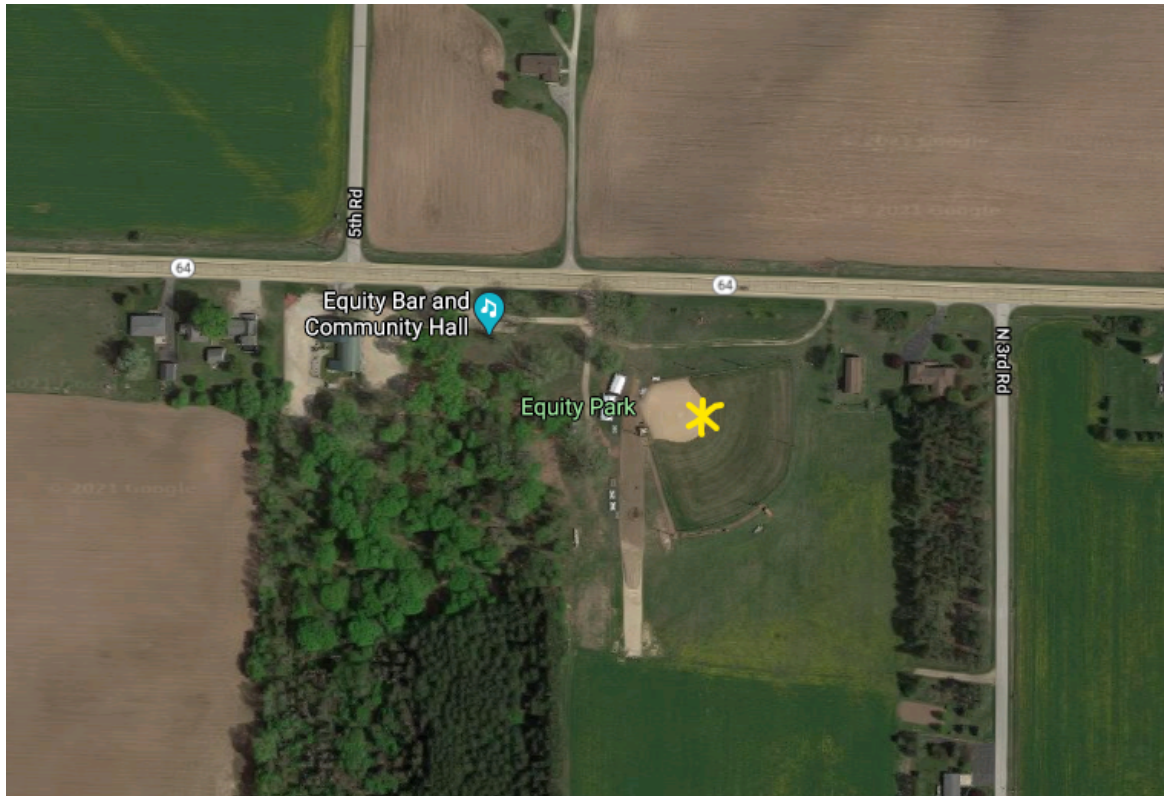


## FIELD LOCATIONS

### EQUITY BALL FIELD (EQUITY BAR)

W7403 STH 64, Pound, WI 54161

2.5 miles east of the 141/64 intersection on Hwy 64



## COLEMAN FIELD

Elm Drive & Hammes Ave, Coleman



## POUND FIELD

Edward Gengler Memorial Field  
Parkview Lane, Pound



## COUNTY LINE BALL FIELD

200 yards south of CR-M and Church Road, Grover

Approx. 8.5 miles from Coleman area east of Hwy 141 on CR-M



## CRIVITZ BALL (3) FIELDS

Hall Ave and Louisa Street, Crivitz  
West of Hwy 141



## LENA BALL (2) FIELDS

Directly behind the Lena School

Enter through the HS parking lot or down Pelkey Street (across from Kugel's)



## WAUSAUKEE BALL FIELD

Just to the east of the fairgrounds in Wausaukee  
Fairgrounds Road, go past the fairgrounds, through the Cedar Street  
intersection to the field on the left

